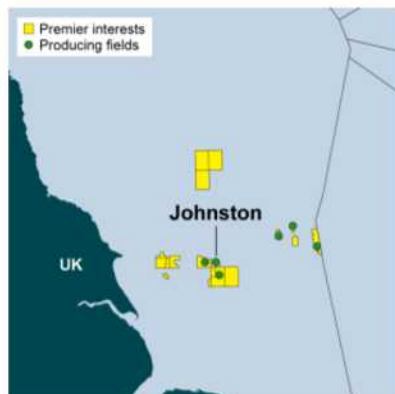


# Infrastructure Code of Practice









## Johnston



The **Johnston** gas field is a subsea manifold tied back to the Ravenspurn North platform. Gas is exported to the Cleeton facilities then onward via the Cleeton/Ravenspurn South line to the Dimlington terminal.

KEY FACTS	
Field	Johnston gas field
Block	43/27a
Sector	Southern Gas Basin, UKCS
Approx. distance to land	105 km east of Hull
Water Depth	35 metres
Hydrocarbons Produced	Gas
Export Method	<ul style="list-style-type: none"> <li>Subsea manifold tied back to Ravenspurn North</li> <li>Topsides separation, metering and dehydration</li> <li>Gas is exported to the Cleeton facilities then onward via the Cleeton/Ravenspurn South line to the Dimlington terminal</li> </ul>
Manned / Unmanned	N/A
Operated /Non-Operated	Operated
% of Harbour Equity	50.1%
First Production	1994
Accommodation Onboard	
Key Commercial Terms	Wet Gas export to Dimlington subject to Ravenspurn North Operator agreement

Infrastructure Information				
Entry Specification:	O <sub>2</sub>	<0.1 mol%	Wobbe	47.2-51.41 MJ/m <sup>3</sup>
	CO <sub>2</sub>	<2.0 mol%	Temp	4-65 deg C
	H <sub>2</sub> S	<3.3 ppm	H <sub>2</sub> O	<36 bbls/mcm
	S	<35 ppm	Gross CV	36.87-42.25 MJ/ m <sup>3</sup>
Exit Specification:	n/a			

Maximum Technical Capacity						
Johnston Gas Field	Ullage as % of system capacity					Comment
	2021	2022	2023	2024	2025	
Gas: 90 mmscfd						 > 25%  < 5%  5% to 25%

Last update: February 2021

**Disclaimer:**

While this information has been prepared in good faith, no warranty or representation (implied or expressed) is made as to its accuracy, completeness or relevance for use by any other party and no liability is accepted by Harbour Energy under any circumstances relating to the information and the use thereof

**Contact Information**

[info@harbourenergy.com](mailto:info@harbourenergy.com)

T: 44 (0) 1224 618900